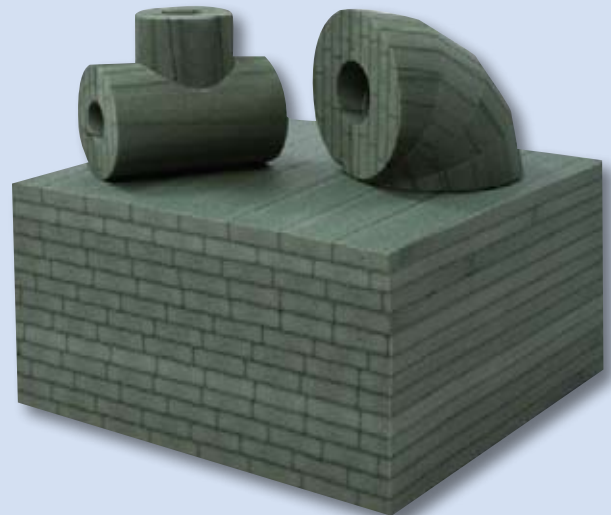
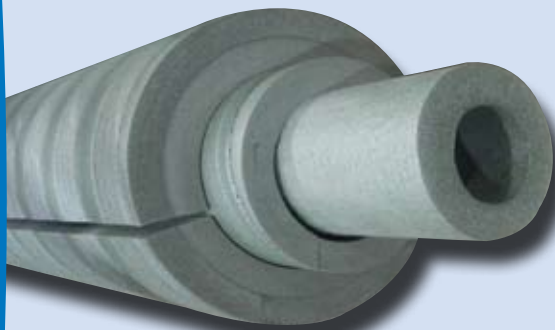


CRYOflex™

Designed for Industrial Refrigeration

Physical Properties	CRYOflex	Polystyrene	Polyisocyanurate	ASTM
Temp Min/Max °F	-200 / 200	-297 / 165	-297 / 300	C1427
Density lbs/ft ³ (kg/m ³)	1.94 (31)	1.6 (26)	1.65 - 4.0 (26-64)	D1622
pH	6-8	Not stated	Not stated	
Min Compression @10% (psi)	6	20	16-125	D3575
Dimensional Change @ Max Temp	4%	2%	2%	C356
k-factor BTU•in/hr•ft ² /°F				C518
-100	0.173	0.171	0.19	
50	0.248	0.246	0.20	
75	0.261	0.259	0.20	
Surface Burning Characteristics (flame/smoke)	35 / 115	5 / 165	Not stated	E84
Water Absorption by Volume				C240
2 hours	0.01%	Not stated	Not stated	
24 hours	0.05%	0.50%	0.5% - 0.8%	
WVTR 75°F, 50% RH, 1" thick (g/hr•m ²)	0.011	0.371	Not stated	E96
Water Vapor Permeability (grains/ft ² •hr•in Hg)	0.048	1.5	2.9	E96
Coefficient of Thermal Expansion (in/in/°F)	181.6 x 10 ⁻⁶	35.6 x 10 ⁻⁶	50 x 10 ⁻⁶	E228



3006 Anaconda Road | Tarboro, NC 27886 | p 866-876-2684 | f 866-876-2688
www.nomacoinsulation.com

©August 2010 CRYOFLEX and Nomaco Insulation are trademarks of Nomaco Insulation.

NI-0063-0810